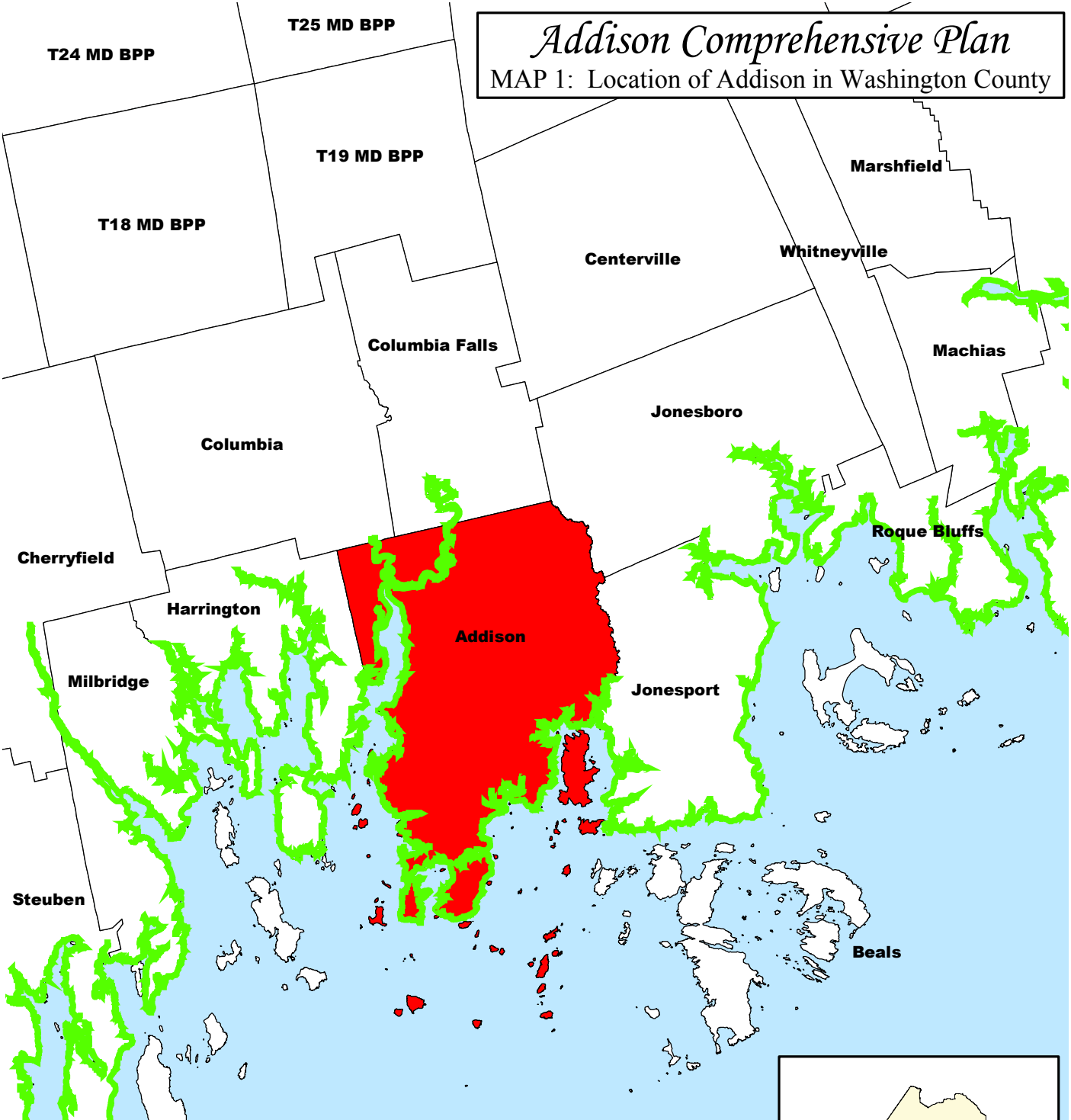


Addison Comprehensive Plan

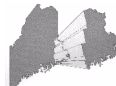
MAP 1: Location of Addison in Washington County



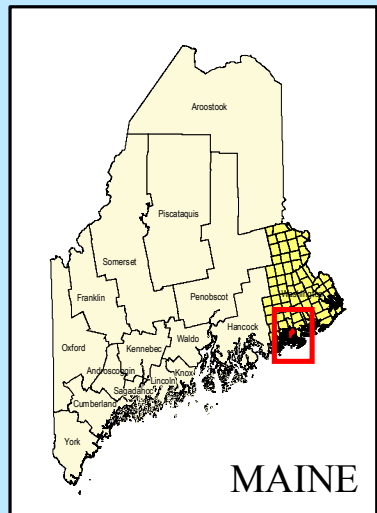
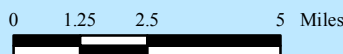
ADDISON
 Area in square miles: 97.23
 (54.85 land, 42.38 water)



Source: MEGIS
 Map revised: June, 2004



Washington County Council of Governments
 PO BOX 631
 Calais, ME 04619
 (207) 454-0465
 Web site: www.emdc.org/wccog.htm



MAINE

See map disclaimer at end of the Executive Summary.